

# GC Columns

## ■ SH-I-XLB

- Low-polarity proprietary phase
- General-purpose columns exhibiting extremely low bleed. Ideal for many GCMS applications, including pesticides, PCB congeners (e.g., Aroclor mixes), PAHs.
- Unique selectivity.
- Similar phases: DB-XLB, VF-Xms

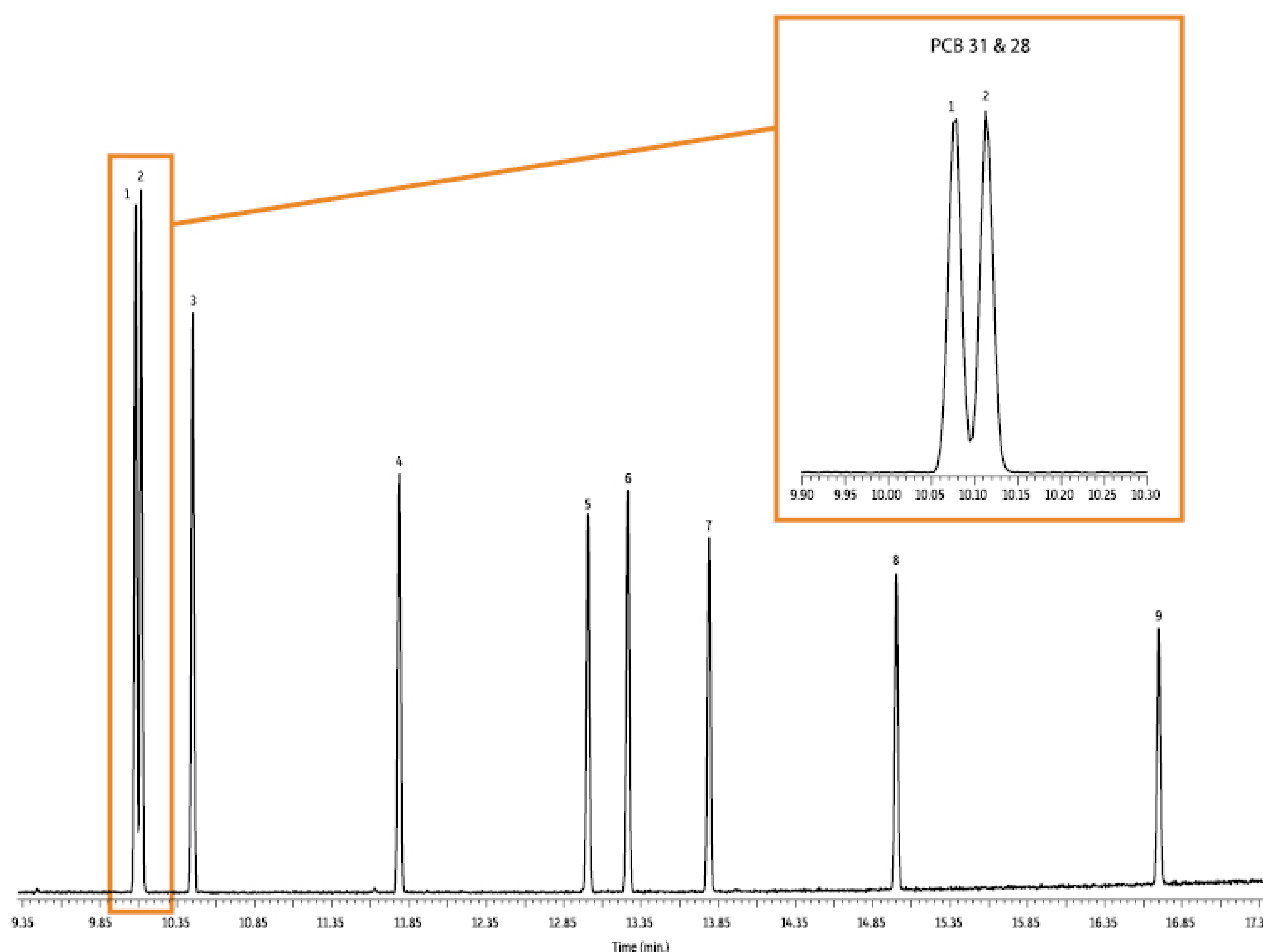
ID	df	Temp. Range	20 m	30 m	60 m
0.18 mm	0.18 µm	30 to 340/360 °C	227-36309-01	–	–
0.25 mm	0.10 µm	30 to 340/360 °C	–	227-36042-01	–
	0.25 µm	30 to 340/360 °C	–	227-36043-01	227-36043-02
	0.50 µm	30 to 340/360 °C	–	227-36044-01	–
	1.00 µm	30 to 340/360 °C	–	227-36045-01	–
0.32 mm	0.25 µm	30 to 340/360 °C	–	227-36046-01	227-36046-02
	0.50 µm	30 to 340/360 °C	–	227-36047-01	–
	1.00 µm	30 to 340/360 °C	–	227-36048-01	–
0.53 mm	0.50 µm	30 to 320/360 °C	–	227-36049-01	–
	1.50 µm	30 to 320/360 °C	–	227-36050-01	–

\* Maximum temperatures listed are for shorter length columns. Longer columns may have a different maximum temperature.

## EU PCB Congeners

### ■ Peaks

1. PCB 31
2. PCB 28
3. PCB 52
4. PCB 101
5. PCB 118
6. PCB 153
7. PCB 138
8. PCB 180
9. PCB 194



### ■ Conditions

**Column** : SH-I-XLB, 30 m, 0.25 mm ID, 0.25 µm (P/N: 227-36043-01)

**Sample** : PCB congener standard  
Diluent: Dichloromethane  
Conc.: 3.5 ppm

**Inj. Vol.** : 0.5 µL splitless (hold 1.75 min)

**Inj. Temp** : 300 °C

**Purge Flow** : 50 mL/min

**Oven Temp** : 40 °C (hold 2 min) to 240 °C at 30 °C/min (hold 2 min) to 340 °C at 10 °C/min (hold 5 min)

**Carrier Gas** : He, constant flow rate 1 mL/min

**Detector** : MS-QP  
Transfer Line Temp: 300 °C

Source Temp: 280 °C

Ionization: EI

Scan Range: 45-550